

RUCIKA

Dimana air mengalir sampai jauh

DAPATKAN HARGA PRODUK yang Anda Cari di sini!



KEBANGGAAN INDONESIA KUALITAS DUNIA



CALCIUM ZINC TANPA TIMBAL



© 2021 JAPAN INSTITUTE OF PLANT MAINTENANCE

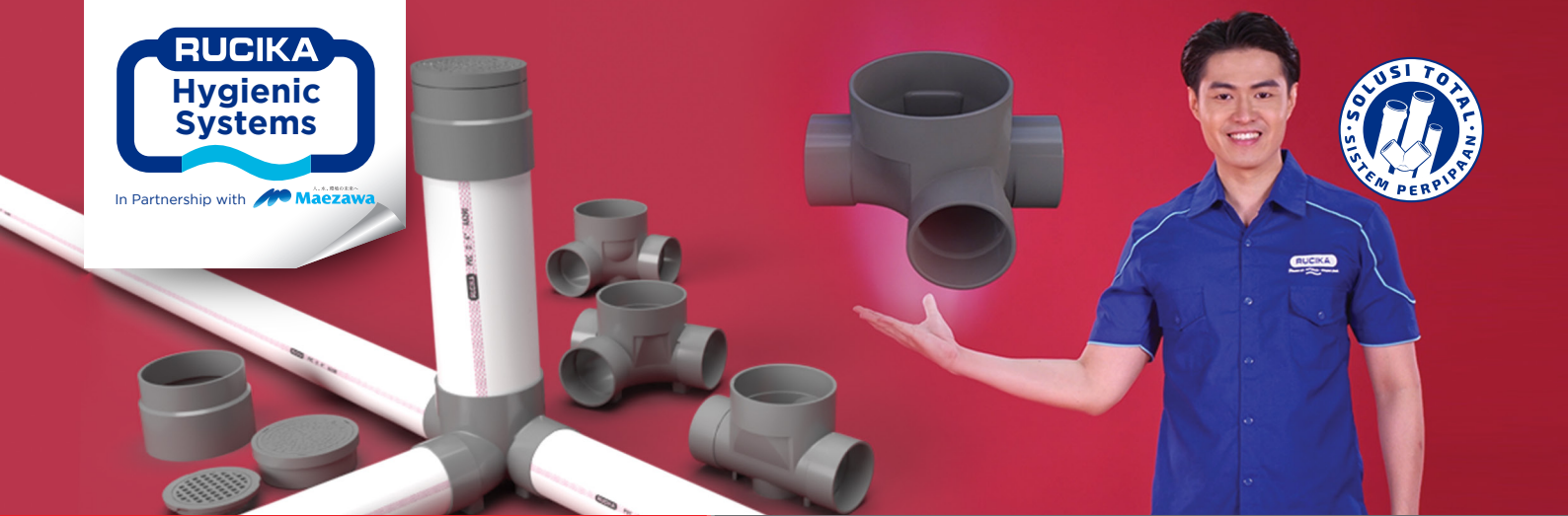
Efektif : 13 September 2022

RUCIKA

Dimana air mengalir sampai jauh

Pipa PVC Standard | Pipa JIS | Lem Perekat Pipa PVC
Access Fitting | Special Fitting | Transparent Fitting
Pipa & Fitting PP-R

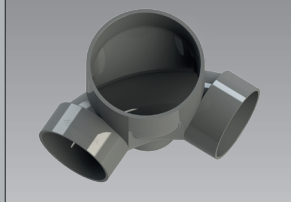




Access Fitting

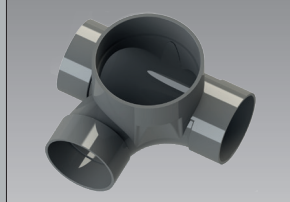
Rangkaian produk yang dapat memudahkan perawatan instalasi perpipaan air kotor di dalam dan luar ruangan

90L (D)



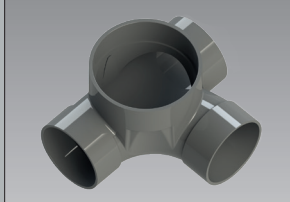
Connector 6"		Access Cap 6"	
DN		ISI / BOX	
mm	Inch		
100 x 150	4 x 6	2	
Harga / Set			
Rp. 585.900,-			

90Y LEFT (D)

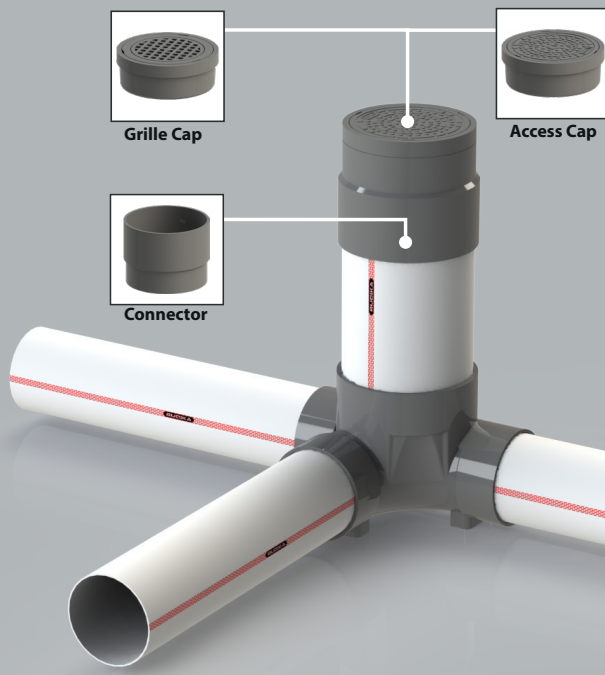


Connector 6"		Access Cap 6"	
DN		ISI / BOX	
mm	Inch		
100 x 150	4 x 6	2	
Harga / Set			
Rp. 642.300,-			

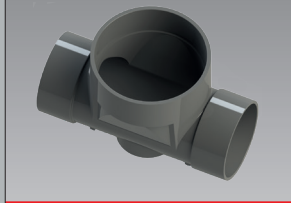
90Y RIGHT (D)



Connector 6"		Access Cap 6"	
DN		ISI / BOX	
mm	Inch		
100 x 150	4 x 6	2	
Harga / Set			
Rp. 642.300,-			

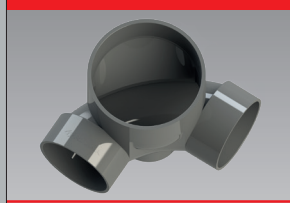


ST (D)



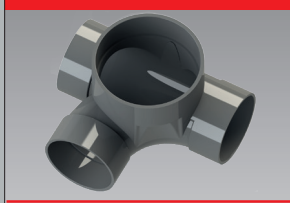
Connector 6"		Access Cap 6"	
DN		ISI / BOX	
mm	Inch		
100 x 150	4 x 6	2	
Harga / Set			
Rp. 578.000,-			

90L (D) With GRILLE CAP



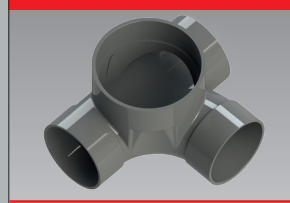
Connector 6"		Grille Cap 6"	
DN		ISI / BOX	
mm	Inch		
100 x 150	4 x 6	2	
Harga / Set			
Rp. 724.800,-			

90Y LEFT (D) With GRILLE CAP



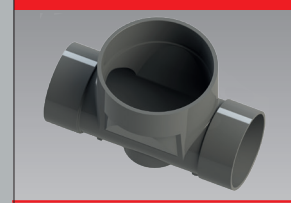
Connector 6"		Grille Cap 6"	
DN		ISI / BOX	
mm	Inch		
100 x 150	4 x 6	2	
Harga / Set			
Rp. 781.600,-			

90Y RIGHT (D) With GRILLE CAP



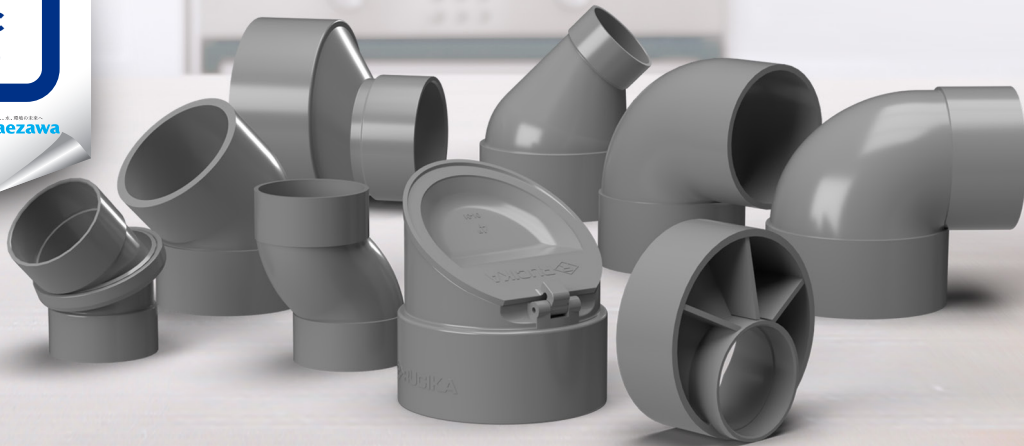
Connector 6"		Grille Cap 6"	
DN		ISI / BOX	
mm	Inch		
100 x 150	4 x 6	2	
Harga / Set			
Rp. 781.600,-			

ST (D) With GRILLE CAP



Connector 6"		Grille Cap 6"	
DN		ISI / BOX	
mm	Inch		
100 x 150	4 x 6	2	
Harga / Set			
Rp. 716.900,-			

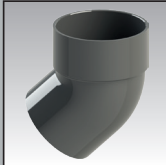
*Harga sudah termasuk PPN 11%
DN: Diameter Nominal



Special Fitting

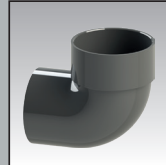
Rangkaian produk yang dapat memudahkan dan mempercepat pekerjaan instalasi air kotor/buangan

ELBOW SOCKET SPIGOT 45° 45 KL



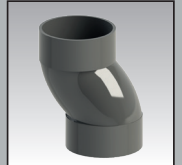
DN		ISI / BOX	HARGA / PCS*
mm	inch		
50	2	150	Rp. 12.800,-
75	3	36	Rp. 28.100,-
100	4	18	Rp. 48.100,-

ELBOW SOCKET SPIGOT 90° 90 KL



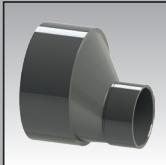
DN		ISI / BOX	HARGA / PCS*
mm	inch		
50	2	72	Rp. 12.300,-
75	3	30	Rp. 28.900,-
100	4	15	Rp. 57.700,-

S SOCKET VUSS



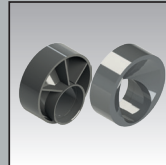
DN		ISI / BOX	HARGA / PCS*
mm	inch		
50	2	90	Rp. 27.400,-
75	3	26	Rp. 60.400,-
100	4	12	Rp. 103.200,-

ECCENTRIC INCREASER OJH



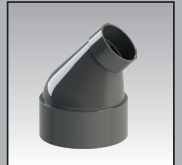
DN		ISI / BOX	HARGA / PCS*
mm	inch		
75 x 50	3 x 2	96	Rp. 16.600,-
100 x 50	4 x 2	48	Rp. 27.800,-
100 x 75	4 x 3	30	Rp. 32.300,-

ECCENTRIC INCREASER BUSHING VUHB



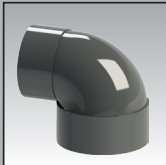
DN		ISI / BOX	HARGA / PCS*
mm	inch		
75 x 50	3 x 2	160	Rp. 16.600,-
100 x 50	4 x 2	84	Rp. 27.800,-
100 x 75	4 x 3	75	Rp. 32.300,-

ELBOW INCREASER 45° VU 45 L



DN		ISI / BOX	HARGA / PCS*
mm	inch		
75 x 50	3 x 2	64	Rp. 30.100,-
100 x 50	4 x 2	31	Rp. 40.100,-
100 x 75	4 x 3	27	Rp. 51.600,-

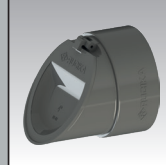
ELBOW INCREASER 90° VUL



DN		ISI / BOX	HARGA / PCS*
mm	inch		
Baru 50 x 40	2 x 1½	34	Rp. 64.200,-
75 x 50	3 x 2	36	Rp. 17.700,-
Baru 75 x 65	3 x 2½	32	Rp. 109.000,-
100 x 50	4 x 2	20	Rp. 23.800,-
100 x 75	4 x 3	18	Rp. 36.200,-

BARU

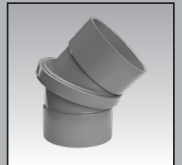
BACKFLOW VALVE LBFA



DN		ISI / BOX	HARGA / PCS*
mm	inch		
75	3	12	Rp. 28.100,-
100	4	18	Rp. 43.100,-
150	6	4	Rp. 109.400,-

BARU

FLEXIBLE ELBOW ML



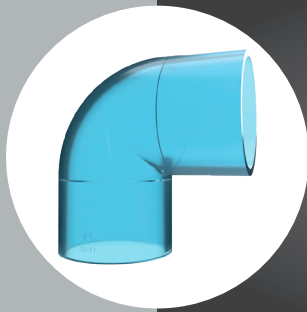
DN		ISI / BOX	HARGA / PCS*
mm	inch		
50	2	22	Rp. 139.600,-
75	3	22	Rp. 184.300,-
100	4	12	Rp. 306.200,-

Efektif: 13 September 2022

*Harga sudah termasuk PPN 11%
DN: Diameter Nominal

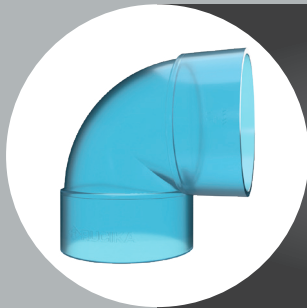
Transparent Fitting

Rangkaian produk yang dapat memudahkan untuk memudahkan proses inspeksi saat instalasi pipa dan penyambungan yang tepat sampai batas stopper



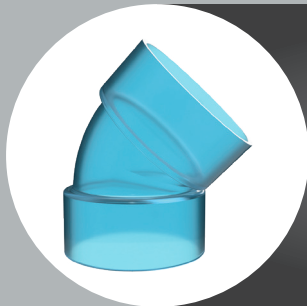
**TRANSPARENT FITTING
ELBOW 90° (AW)**

DN		Isi / Box	Harga / Pcs*
mm	Inch		
16	½"	225	Rp. 5.600,-
20	¾"	145	Rp. 7.400,-
25	1"	80	Rp. 10.400,-
50	2"	18	Rp. 45.000,-
75	3"	16	Rp. 102.600,-



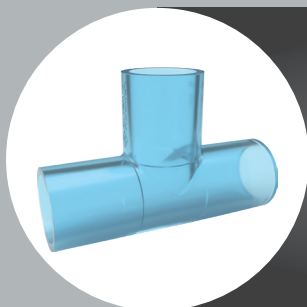
**TRANSPARENT FITTING
ELBOW 90° (D)**

DN		Isi / Box	Harga / Pcs*
mm	Inch		
100	4"	15	Rp. 70.600,-



**TRANSPARENT FITTING
ELBOW 45° (D)**

DN		Isi / Box	Harga / Pcs*
mm	Inch		
100	4"	15	Rp. 58.900,-




**TRANSPARENT FITTING
TEE (AW)**


DN		Isi / Box	Harga / Pcs*
mm	Inch		
16	½"	150	Rp. 8.000,-
20	¾"	100	Rp. 10.800,-

*Harga sudah termasuk PPN 11%
DN: Diameter Nominal

PIPA PVC RUCIKA STANDARD UNTUK APLIKASI AIR BERSIH & AIR LIMBAH


PRODUK	DN		OD (mm)	4 M / BATANG		5,8 M / BATANG*	
	mm	inch		AW**	D***	AW**	D***
RUCIKA Standard 	16	1/2"	22	Rp. 26.800,-	*	Rp. 39.700,-	*
	20	3/4"	26	Rp. 36.300,-	*	Rp. 54.400,-	*
	25	1"	32	Rp. 49.700,-	*	Rp. 74.100,-	*
	35	1 1/4"	42	Rp. 74.200,-	Rp. 46.600,-	Rp. 111.300,-	Rp. 70.200,-
	40	1 1/2"	48	Rp. 85.200,-	Rp. 52.700,-	Rp. 127.600,-	Rp. 78.700,-
	50	2"	60	Rp. 108.900,-	Rp. 67.500,-	Rp. 162.900,-	Rp. 101.000,-
	65	2 1/2"	76	Rp. 158.700,-	Rp. 91.200,-	Rp. 237.800,-	Rp. 136.600,-
	75	3"	89	Rp. 223.500,-	Rp. 121.000,-	Rp. 335.000,-	Rp. 181.100,-
	100	4"	114	Rp. 370.300,-	Rp. 190.300,-	Rp. 555.000,-	Rp. 285.100,-
	125	5"	140	Rp. 586.500,-	Rp. 292.900,-	Rp. 879.600,-	Rp. 438.800,-
	150	6"	165	Rp. 822.500,-	Rp. 386.200,-	Rp. 1.233.700,-	Rp. 578.800,-
	200	8"	216	Rp. 1.380.000,-	Rp. 679.000,-	Rp. 2.070.100,-	Rp. 1.018.100,-
250	10"	267	Rp. 2.133.700,-	Rp. 1.118.400,-	Rp. 3.200.500,-	Rp. 1.677.300,-	
300	12"	318	Rp. 3.008.500,-	Rp. 1.569.700,-	Rp. 4.512.500,-	Rp. 2.354.500,-	

PIPA PVC RUCIKA JIS K-6741 / K-6742 UNTUK APLIKASI AIR BERSIH & AIR LIMBAH

PRODUK	DN		OD (mm)	4 M / BATANG		5,8 M / BATANG*	
	mm	inch		VP**	VU***	VP**	VU***
RUCIKA JIS 	16	1/2"	22	Rp. 48.500,-	*	Rp. 69.700,-	*
	20	3/4"	26	Rp. 58.000,-	*	Rp. 84.200,-	*
	25	1"	32	Rp. 84.200,-	*	Rp. 121.700,-	*
	35	1 1/4"	42	Rp. 113.600,-	*	Rp. 164.000,-	*
	40	1 1/2"	48	Rp. 147.500,-	Rp. 77.400,-	Rp. 213.700,-	Rp. 111.900,-
	50	2"	60	Rp. 209.400,-	Rp. 97.600,-	Rp. 303.400,-	Rp. 141.100,-
	65	2 1/2"	76	Rp. 269.300,-	Rp. 154.300,-	Rp. 390.400,-	Rp. 223.400,-
	75	3"	89	Rp. 429.000,-	Rp. 225.500,-	Rp. 621.400,-	Rp. 327.000,-
	100	4"	114	Rp. 662.800,-	Rp. 338.300,-	Rp. 960.700,-	Rp. 490.400,-
	125	5"	140	Rp. 829.600,-	Rp. 509.400,-	Rp. 1.202.800,-	Rp. 738.500,-
	150	6"	165	Rp. 1.245.400,-	Rp. 732.200,-	Rp. 1.805.900,-	Rp. 1.061.800,-
	200	8"	216	Rp. 1.883.600,-	Rp. 1.221.600,-	Rp. 2.730.600,-	Rp. 1.771.200,-
250	10"	267	Rp. 2.869.700,-	Rp. 1.809.000,-	Rp. 4.160.500,-	*	
300	12"	318	Rp. 4.070.800,-	Rp. 2.539.900,-	Rp. 5.902.100,-	*	

Keterangan :

- * Khusus Wilayah Medan.
- ** AW / VP : Pipa untuk tekanan kerja 10 Kg / cm² | *** D / VU : Pipa untuk aplikasi air limbah.
- Harga sudah termasuk PPN 11%.
- Perubahan harga dapat terjadi tanpa pemberitahuan terlebih dahulu.
- DN: Diameter Nominal | OD: Outside Diameter



RUglue
LEM PIPA & FITTING PVC
Rekat Sempurna
LEM PIPA - SAMBUNGAN (FITTING) PVC

Lem Pipa uPVC		
Jenis	Ukuran	Harga
Kemasan Tube	50 Gr	Rp.13.000,-
Kemasan Botol	60 Gr	Rp.12.300,-
Kemasan Kaleng	400 Gr	Rp.61.100,-

FITTING RUCIKA STANDARD JIS K - 6743 UNTUK APLIKASI AIR BERSIH BERTEKANAN

Clean Out (AW)



DN	ISI / BOX	HARGA / PCS
mm 50 / inch 2"	36	Rp. 14.100,-
mm 75 / inch 3"	16	Rp. 31.000,-
mm 100 / inch 4"	18	Rp. 51.500,-
mm 150 / inch 6"	2	Rp. 134.900,-

FAUCET ELBOW (AW)



DN	ISI / BOX	HARGA / PCS
mm 16 x 1/2" / inch 1/2"	200	Rp. 2.500,-
mm 20 x 1/2" / inch 1/2" x 3/4"	175	Rp. 2.800,-
mm 20 x 3/4" / inch 3/4"	130	Rp. 3.700,-
mm 25 x 1" / inch 1"	85	Rp. 5.300,-

UNION SOCKET (AW)



DN	ISI / BOX	HARGA / PCS
mm 16 / inch 1/2"	110	Rp. 27.800,-
mm 20 / inch 3/4"	72	Rp. 34.000,-
mm 25 / inch 1"	54	Rp. 46.600,-
mm 35 / inch 1 1/4"	30	Rp. 77.300,-
mm 40 / inch 1 1/2"	18	Rp. 105.400,-

UNION THREAD (AW)



DN	ISI / BOX	HARGA / PCS
mm 16 / inch 1/2"	110	Rp. 27.800,-
mm 20 / inch 3/4"	72	Rp. 34.000,-
mm 25 / inch 1"	54	Rp. 46.600,-
mm 35 / inch 1 1/4"	30	Rp. 77.300,-
mm 40 / inch 1 1/2"	18	Rp. 105.400,-

FAUCET ELBOW with Metal Insert (AW)



DN		ISI / BOX	HARGA / PCS
mm	inch		
16	½"	200 (4@50PCS)	Rp. 10.400,-
16 x 20	½" x ¾"	180	Rp. 15.100,-
20	¾"	120 (4@30PCS)	Rp. 17.600,-

FAUCET SOCKET with Metal Insert (AW)



DN		ISI / BOX	HARGA / PCS
mm	inch		
16	½"	240 (4@60PCS)	Rp. 10.100,-
16 x 20	½" x ¾"	205	Rp. 14.800,-
20	¾"	160 (4@40PCS)	Rp. 16.700,-

ELBOW (AW)



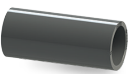
DN		ISI / BOX	HARGA / PCS
mm	inch		
16	½"	225	Rp. 2.500,-
20	¾"	145	Rp. 3.200,-
25	1"	80	Rp. 4.700,-
35	1¼"	40	Rp. 8.100,-
40	1½"	25	Rp. 11.200,-
50	2"	18	Rp. 16.900,-
65	2½"	28	Rp. 26.700,-
75	3"	16	Rp. 44.400,-
100	4"	9	Rp. 82.100,-
125	5"	5	Rp. 124.200,-
150	6"	5	Rp. 207.500,-
200	8"	2	Rp. 469.800,-
250	10"	1	Rp. 627.900,-
300	12"	1	Rp. 932.700,-

VALVE SOCKET (AW)



DN		ISI / BOX	HARGA / PCS
mm	inch		
16 x ½"	½"	450	Rp. 1.700,-
20 x ½"	½" x ¾"	250	Rp. 2.700,-
16 x ¾"	¾" x ½"	285	Rp. 2.400,-
20 x ¾"	¾"	320	Rp. 2.500,-
16 x 1"	1" x ½"	200	Rp. 2.700,-
20 x 1"	1" x ¾"	175	Rp. 2.800,-
25 x 1"	1"	175	Rp. 3.200,-
35 x 1¼"	1¼"	100	Rp. 5.700,-
40 x 1½"	1½"	60	Rp. 7.800,-
50 x 2"	2"	40	Rp. 11.300,-
65 x 2½"	2½"	54	Rp. 12.600,-
75 x 3"	3"	48	Rp. 26.200,-
100 x 4"	4"	18	Rp. 46.200,-

SOCKET (AW)



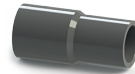
DN		ISI / BOX	HARGA / PCS
mm	inch		
16	½"	300	Rp. 2.200,-
20	¾"	200	Rp. 2.600,-
25	1"	100	Rp. 3.800,-
35	1¼"	64	Rp. 6.300,-
40	1½"	40	Rp. 9.100,-
50	2"	25	Rp. 14.000,-
65	2½"	40	Rp. 23.300,-
75	3"	32	Rp. 33.500,-
100	4"	12	Rp. 66.100,-
150	6"	4	Rp. 139.100,-
200	8"	4	Rp. 280.800,-
250	10"	2	Rp. 444.700,-

CAP (AW)



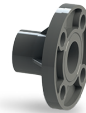
DN		ISI / BOX	HARGA / PCS
mm	inch		
16	½"	500	Rp. 1.500,-
20	¾"	400	Rp. 1.700,-
25	1"	250	Rp. 2.600,-
35	1¼"	128	Rp. 4.100,-
40	1½"	84	Rp. 7.000,-
50	2"	54	Rp. 8.100,-
65	2½"	20	Rp. 16.600,-
75	3"	48	Rp. 25.000,-
100	4"	18	Rp. 52.300,-
150	6"	8	Rp. 89.700,-
200	8"	3	Rp. 175.900,-

REDUCING SOCKET (AW)



DN		ISI / BOX	HARGA / PCS
mm	inch		
20 x 16	¾" x ½"	225	Rp. 2.700,-
25 x 16	1" x ½"	215	Rp. 2.800,-
25 x 20	1" x ¾"	150	Rp. 3.600,-
35 x 16	1¼" x ½"	110	Rp. 3.900,-
35 x 20	1¼" x ¾"	110	Rp. 4.600,-
35 x 25	1¼" x 1"	110	Rp. 5.300,-
40 x 16	1½" x ½"	72	Rp. 5.700,-
40 x 20	1½" x ¾"	65	Rp. 6.000,-
40 x 25	1½" x 1"	65	Rp. 7.300,-
40 x 35	1½" x 1¼"	45	Rp. 8.200,-
50 x 16	2" x ½"	45	Rp. 8.500,-
50 x 20	2" x ¾"	45	Rp. 9.100,-
50 x 25	2" x 1"	40	Rp. 10.000,-
50 x 35	2" x 1¼"	45	Rp. 11.600,-
50 x 40	2" x 1½"	40	Rp. 12.400,-
65 x 40	2½" x 1½"	20	Rp. 17.900,-
65 x 50	2½" x 2"	20	Rp. 19.400,-
75 x 20	3" x ¾"	20	Rp. 14.400,-
75 x 25	3" x 1"	16	Rp. 14.900,-
75 x 35	3" x 1¼"	16	Rp. 18.200,-
75 x 40	3" x 1½"	16	Rp. 20.200,-
75 x 50	3" x 2"	16	Rp. 21.600,-
75 x 65	3" x 2½"	12	Rp. 32.100,-
100 x 40	4" x 1½"	18	Rp. 52.800,-
100 x 50	4" x 2"	18	Rp. 57.400,-
100 x 65	4" x 2½"	18	Rp. 58.600,-
100 x 75	4" x 3"	18	Rp. 61.300,-
125 x 75	5" x 3"	9	Rp. 83.600,-
125 x 100	5" x 4"	10	Rp. 92.400,-
150 x 75	6" x 3"	5	Rp. 105.300,-
150 x 100	6" x 4"	5	Rp. 114.800,-
150 x 125	6" x 5"	5	Rp. 120.200,-
200 x 100	8" x 4"	4	Rp. 206.300,-
200 x 125	8" x 5"	2	Rp. 221.500,-
200 x 150	8" x 6"	2	Rp. 235.200,-
250 x 200	10" x 8"	2	Rp. 411.100,-

FLANGE (AW)



DN		ISI / BOX	HARGA / PCS
mm	inch		
50	2"	31	Rp. 33.500,-
65	2½"	15	Rp. 43.700,-
75	3"	15	Rp. 51.800,-
100	4"	12	Rp. 85.500,-
150	6"	8	Rp. 195.000,-

Y - BRANCH (AW)



DN		ISI / BOX	HARGA / PCS
mm	inch		
50	2"	20	Rp. 37.200,-
65 x 50	2½" x 2"	17	Rp. 48.200,-
65	2½"	10	Rp. 52.800,-
75 x 50	3" x 2"	11	Rp. 56.600,-
75	3"	10	Rp. 80.500,-
100 x 50	4" x 2"	7	Rp. 101.600,-
100 x 75	4" x 3"	6	Rp. 115.600,-
100	4"	4	Rp. 169.500,-
150 x 75	6" x 3"	2	Rp. 298.000,-
150 x 100	6" x 4"	4	Rp. 319.900,-
200 x 100	8" x 4"	3	Rp. 497.200,-
200	8"	2	Rp. 1.433.900,-

PLUG (AW)



DN		ISI / BOX	HARGA / PCS
mm	inch		
16	½"	1200 (6@200pcs)	Rp. 1.400,-
20	¾"	700 (7@100pcs)	Rp. 1.700,-
25	1"	575	Rp. 1.900,-

DOUBLE NIPPLE (AW)



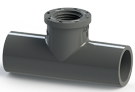
DN		ISI / BOX	HARGA / PCS
mm	inch		
16	½"	560	Rp. 1.400,-
20	¾"	335	Rp. 1.700,-
25	1"	220	Rp. 2.800,-

TEE (AW)



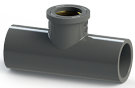
mm	DN		ISI / BOX	HARGA / PCS
	inch			
16	1/2"		150	Rp. 3.200,-
20 x 16	3/4" x 1/2"		100	Rp. 4.300,-
20	3/4"		100	Rp. 4.300,-
25 x 16	1" x 1/2"		65	Rp. 6.300,-
25 x 20	1" x 3/4"		65	Rp. 6.500,-
25	1"		60	Rp. 6.900,-
35 x 16	1 1/4" x 1/2"		45	Rp. 9.100,-
35 x 20	1 1/4" x 3/4"		45	Rp. 9.800,-
35 x 25	1 1/4" x 1"		35	Rp. 11.000,-
35	1 1/4"		30	Rp. 11.300,-
40 x 16	1 1/2" x 1/2"		25	Rp. 12.600,-
40 x 20	1 1/2" x 3/4"		24	Rp. 12.600,-
40 x 25	1 1/2" x 1"		24	Rp. 13.500,-
40 x 35	1 1/2" x 1 1/4"		20	Rp. 15.000,-
40	1 1/2"		20	Rp. 15.000,-
50 x 16	2" x 1/2"		17	Rp. 15.100,-
50 x 20	2" x 3/4"		15	Rp. 15.300,-
50 x 25	2" x 1"		15	Rp. 15.900,-
50 x 35	2" x 1 1/4"		40	Rp. 21.700,-
50 x 40	2" x 1 1/2"		12	Rp. 21.800,-
50	2"		30	Rp. 23.800,-
65 x 40	2 1/2" x 1 1/2"		6	Rp. 36.100,-
65 x 50	2 1/2" x 2"		17	Rp. 36.300,-
65	2 1/2"		16	Rp. 38.800,-
75 x 20	3" x 3/4"		20	Rp. 32.300,-
75 x 25	3" x 1"		18	Rp. 33.300,-
75 x 35	3" x 1 1/4"		18	Rp. 37.300,-
75 x 40	3" x 1 1/2"		16	Rp. 39.100,-
75 x 50	3" x 2"		20	Rp. 42.100,-
75 x 65	3" x 2 1/2"		10	Rp. 48.100,-
75	3"		12	Rp. 54.800,-
100 x 40	4" x 1 1/2"		8	Rp. 83.700,-
100 x 50	4" x 2"		6	Rp. 84.500,-
100 x 65	4" x 2 1/2"		7	Rp. 100.300,-
100 x 75	4" x 3"		6	Rp. 102.600,-
100	4"		5	Rp. 109.400,-
125 x 75	5" x 3"		4	Rp. 145.200,-
125 x 100	5" x 4"		6	Rp. 149.100,-
125	5"		5	Rp. 192.800,-
150 x 50	6" x 2"		3	Rp. 217.300,-
150 x 75	6" x 3"		2	Rp. 241.500,-
150 x 100	6" x 4"		2	Rp. 251.800,-
150 x 125	6" x 5"		4	Rp. 272.400,-
150	6"		3	Rp. 274.900,-
200	8"		2	Rp. 569.600,-

FAUCET TEE (AW)



mm	DN		ISI / BOX	HARGA / PCS
	inch			
16 x 1/2"	1/2"		140	Rp. 4.100,-
20 x 1/2"	1/2" x 3/4"		100	Rp. 4.300,-
20 x 3/4"	3/4"		85	Rp. 4.600,-

FAUCET TEE with Metal Insert (AW)



mm	DN		ISI / BOX	HARGA / PCS
	inch			
16 x 1/2"	1/2"		140	Rp. 16.300,-
20 x 1/2"	1/2" x 3/4"		110	Rp. 16.900,-
20 x 3/4"	3/4"		85	Rp. 29.400,-

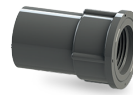
FITTING RUCIKA STANDARD JIS K - 6739 UNTUK APLIKASI AIR KOTOR & BUANGAN

SOCKET (D - DS)



mm	DN		ISI / BOX	HARGA / PCS
	inch			
35	1 1/4"		200	Rp. 2.300,-
40	1 1/2"		115	Rp. 2.700,-
50	2"		72	Rp. 4.000,-
65	2 1/2"		100	Rp. 6.500,-
75	3"		60	Rp. 10.100,-
100	4"		30	Rp. 17.900,-
125	5"		30	Rp. 33.600,-
150	6"		18	Rp. 43.700,-
200	8"		8	Rp. 115.700,-
250	10"		8	Rp. 176.800,-

FAUCET SOCKET (AW)



mm	DN		ISI / BOX	HARGA / PCS
	inch			
16 x 1/2"	1/2"		300	Rp. 2.200,-
20 x 1/2"	1/2" x 3/4"		200	Rp. 2.600,-
20 x 3/4"	3/4"		180	Rp. 2.800,-
25 x 1/2"	1/2" x 1"		165	Rp. 2.800,-
25 x 3/4"	3/4" x 1"		150	Rp. 3.500,-
16 x 1"	1" x 1/2"		140	Rp. 3.500,-
20 x 1"	1" x 3/4"		130	Rp. 3.700,-
25 x 1"	1"		120	Rp. 4.600,-
35 x 1 1/4"	1 1/4"		60	Rp. 6.900,-
40 x 1 1/2"	1 1/2"		40	Rp. 9.100,-
50 x 2"	2"		25	Rp. 11.300,-
65 x 2 1/2"	2 1/2"		12	Rp. 11.800,-
75 x 3"	3"		8	Rp. 28.400,-
100 x 4"	4"		18	Rp. 55.500,-

45° ELBOW (AW)



mm	DN		ISI / BOX	HARGA / PCS
	inch			
25	1"		90	Rp. 5.300,-
35	1 1/4"		48	Rp. 9.100,-
40	1 1/2"		27	Rp. 11.400,-
50	2"		44	Rp. 19.300,-
65	2 1/2"		24	Rp. 29.400,-
75	3"		18	Rp. 46.300,-
100	4"		18	Rp. 80.200,-
125	5"		4	Rp. 118.300,-
150	6"		4	Rp. 228.800,-
200	8"		2	Rp. 491.400,-
250	10"		1	Rp. 991.700,-

LARGE RADIUS TEE (AW)



mm	DN		ISI / BOX	HARGA / PCS
	inch			
40	1 1/2"		20	Rp. 13.000,-
50 x 40	2" x 1 1/2"		8	Rp. 23.000,-
50	2"		6	Rp. 31.500,-
65 x 40	2 1/2" x 1 1/2"		6	Rp. 36.100,-
65 x 50	2 1/2" x 2"		15	Rp. 42.500,-
65	2 1/2"		14	Rp. 44.800,-
75 x 50	3" x 2"		14	Rp. 55.300,-
75	3"		8	Rp. 60.300,-
100 x 40	4" x 1 1/2"		7	Rp. 91.300,-
100 x 50	4" x 2"		15	Rp. 105.300,-
100 x 65	4" x 2 1/2"		6	Rp. 127.100,-
100 x 75	4" x 3"		4	Rp. 148.200,-
100	4"		7	Rp. 177.300,-
125 x 75	5" x 3"		4	Rp. 178.800,-
125 x 100	5" x 4"		6	Rp. 209.400,-
125	5"		2	Rp. 251.800,-
150 x 75	6" x 3"		5	Rp. 283.800,-
150 x 100	6" x 4"		5	Rp. 336.900,-
150	6"		3	Rp. 377.400,-
200 x 100	8" x 4"		2	Rp. 528.100,-
200 x 150	8" x 6"		2	Rp. 673.200,-
200	8"		2	Rp. 783.700,-

ELBOW (D - DL)



mm	DN		ISI / BOX	HARGA / PCS
	inch			
35	1 1/4"		90	Rp. 3.400,-
40	1 1/2"		60	Rp. 4.300,-
50	2"		100	Rp. 7.000,-
65	2 1/2"		45	Rp. 11.200,-
75	3"		30	Rp. 16.300,-
100	4"		15	Rp. 32.300,-
125	5"		15	Rp. 79.200,-
150	6"		10	Rp. 94.200,-
200	8"		3	Rp. 207.400,-
250	10"		2	Rp. 412.800,-
300	12"		1	Rp. 624.100,-

CLEAN OUT (D)



mm	DN		ISI / BOX	HARGA / PCS
	inch			
50	2"		90	Rp. 7.100,-
75	3"		80	Rp. 11.200,-
100	4"		36	Rp. 28.900,-

P-TRAP (D)



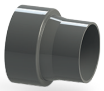
mm	DN		ISI / BOX	HARGA / PCS
	inch			
40	1½"		18	Rp. 15.600,-
50	2"		12	Rp. 16.400,-
75	3"		12	Rp. 34.900,-

LARGE RADIUS TEE (D - LT)



mm	DN		ISI / BOX	HARGA / PCS
	inch			
40 x 35	1½"	1¼"	35	Rp. 7.900,-
40	1½"		30	Rp. 8.000,-
50 x 40	2"	1½"	18	Rp. 11.400,-
50	2"		15	Rp. 15.600,-
65 x 40	2½"	1½"	10	Rp. 15.900,-
65 x 50	2½"	2"	30	Rp. 19.400,-
65	2½"		18	Rp. 24.300,-
75 x 50	3"	2"	20	Rp. 25.400,-
75 x 65	3"	2½"	16	Rp. 32.800,-
75	3"		15	Rp. 33.400,-
100 x 40	4"	1½"	15	Rp. 36.200,-
100 x 50	4"	2"	14	Rp. 39.200,-
100 x 75	4"	3"	8	Rp. 53.600,-
100	4"		6	Rp. 61.300,-
125 x 100	5"	4"	4	Rp. 105.700,-
150 x 75	6"	3"	5	Rp. 108.000,-
150 x 100	6"	4"	5	Rp. 134.500,-
150	6"		4	Rp. 198.600,-
200 x 100	8"	4"	3	Rp. 294.300,-
200 x 150	8"	6"	2	Rp. 328.800,-

INCREASER (D - IN)



mm	DN		ISI / BOX	HARGA / PCS
	inch			
40 x 35	1½"	1¼"	90	Rp. 3.400,-
50 x 35	2"	1¼"	90	Rp. 4.300,-
50 x 40	2"	1½"	75	Rp. 4.500,-
65 x 40	2½"	1½"	45	Rp. 6.900,-
65 x 50	2½"	2"	45	Rp. 7.300,-
75 x 35	3"	1¼"	32	Rp. 6.300,-
75 x 40	3"	1½"	32	Rp. 8.700,-
75 x 50	3"	2"	32	Rp. 9.300,-
75 x 65	3"	2½"	28	Rp. 9.400,-
100 x 50	4"	2"	40	Rp. 15.600,-
100 x 65	4"	2½"	40	Rp. 17.300,-
100 x 75	4"	3"	35	Rp. 18.200,-
125 x 75	5"	3"	25	Rp. 32.300,-
125 x 100	5"	4"	20	Rp. 34.200,-
150 x 75	6"	3"	12	Rp. 50.300,-
150 x 100	6"	4"	10	Rp. 51.000,-
150 x 125	6"	5"	10	Rp. 64.900,-
200 x 100	8"	4"	8	Rp. 108.900,-
200 x 150	8"	6"	4	Rp. 112.900,-

LARGE RADIUS ELBOW (D - LL)



mm	DN		ISI / BOX	HARGA / PCS
	inch			
35	1¼"		60	Rp. 5.300,-
40	1½"		40	Rp. 8.000,-
50	2"		20	Rp. 11.400,-
65	2½"		30	Rp. 16.700,-
75	3"		18	Rp. 25.500,-
100	4"		8	Rp. 53.100,-
125	5"		5	Rp. 95.800,-
150	6"		6	Rp. 159.400,-

LARGE RADIUS DOUBLE TEE (D - WLT)



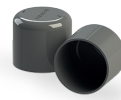
mm	DN		ISI / BOX	HARGA / PCS
	inch			
50 x 50	2"	2"	10	Rp. 19.500,-
75 x 50	3"	2"	15	Rp. 28.900,-
100 x 100	4"	4"	8	Rp. 99.100,-

Y - BRANCH (D - Y)



mm	DN		ISI / BOX	HARGA / PCS
	inch			
40 x 35	1½"	1¼"	40	Rp. 7.600,-
40	1½"		30	Rp. 9.000,-
50 x 35	2"	1¼"	24	Rp. 9.100,-
50	2"		18	Rp. 14.000,-
65 x 50	2½"	2"	27	Rp. 16.900,-
65	2½"		25	Rp. 19.400,-
75 x 50	3"	2"	20	Rp. 24.500,-
75	3"		15	Rp. 30.000,-
100 x 50	4"	2"	15	Rp. 38.200,-
100 x 75	4"	3"	8	Rp. 53.700,-
100	4"		6	Rp. 62.400,-
125 x 100	5"	4"	9	Rp. 90.000,-
150 x 75	6"	3"	8	Rp. 131.200,-
150 x 100	6"	4"	5	Rp. 156.400,-
150	6"		6	Rp. 194.400,-
200 x 100	8"	4"	3	Rp. 309.800,-
200 x 150	8"	6"	2	Rp. 365.000,-

CAP (D)



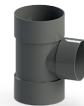
mm	DN		ISI / BOX	HARGA / PCS
	inch			
35	1¼"		144	Rp. 3.900,-
40	1½"		84	Rp. 5.300,-
50	2"		54	Rp. 7.300,-
65	2½"		38	Rp. 9.100,-
75	3"		60	Rp. 11.400,-
100	4"		30	Rp. 21.300,-

45° ELBOW (D - 45 L)



mm	DN		ISI / BOX	HARGA / PCS
	inch			
35	1¼"		100	Rp. 3.200,-
40	1½"		75	Rp. 3.700,-
50	2"		100	Rp. 7.300,-
65	2½"		60	Rp. 9.800,-
75	3"		35	Rp. 15.900,-
100	4"		15	Rp. 26.900,-
125	5"		15	Rp. 51.200,-
150	6"		10	Rp. 99.100,-
200	8"		4	Rp. 218.600,-
250	10"		2	Rp. 304.300,-
300	12"		1	Rp. 478.200,-

TEE (D - DT)



mm	DN		ISI / BOX	HARGA / PCS
	inch			
35	1¼"		55	Rp. 4.500,-
40	1½"		40	Rp. 6.300,-
50	2"		65	Rp. 9.300,-
65 x 40	2½"	1½"	16	Rp. 11.900,-
65 x 50	2½"	2"	45	Rp. 14.400,-
65	2½"		32	Rp. 16.600,-
75 x 40	3"	1½"	36	Rp. 16.600,-
75 x 50	3"	2"	30	Rp. 19.200,-
75 x 65	3"	2½"	22	Rp. 21.300,-
75	3"		20	Rp. 24.900,-
100 x 40	4"	1½"	18	Rp. 29.800,-
100 x 50	4"	2"	15	Rp. 31.700,-
100 x 75	4"	3"	12	Rp. 37.200,-
100	4"		8	Rp. 42.500,-
125 x 75	5"	3"	8	Rp. 60.500,-
125 x 100	5"	4"	6	Rp. 72.000,-
125	5"		10	Rp. 75.400,-
150 x 100	6"	4"	8	Rp. 101.600,-
150	6"		6	Rp. 129.800,-
200 x 100	8"	4"	4	Rp. 138.000,-
200	8"		2	Rp. 269.400,-
250 x 200	10"	8"	2	Rp. 435.500,-

CLEAN OUT CAP (D - CO)



mm	DN		ISI / BOX	HARGA / PCS
	inch			
100	4"		27	Rp. 29.500,-



In Partnership with KEKELIT



PIPA DAN FITTING PP-R SPESIALIS AIR PANAS DAN DINGIN BERTEKANAN

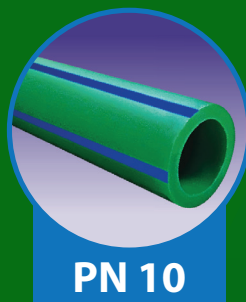
PT. Wahana Duta Jaya Rucika terus memberikan inovasi berbagai produk sistem perpipaan. Bekerjasama dengan **KE KELIT** dari Austria, **RUCIKA KELEN GREEN** merupakan sistem perpipaan lengkap yang dapat dipergunakan untuk saluran air panas dan dingin bertekanan. Materialnya terbuat dari bahan *Polypropylene Random* (PP-R) type 3 / PP-R 80. Dengan jentang produk yang luas, pipa **RUCIKA KELEN GREEN** tersedia dalam berbagai kelas tekanan dan temperatur dengan variasi ketebalan dinding sesuai dengan penggunaannya.

Sistem sambungan yang digunakan oleh **RUCIKA KELEN GREEN** adalah sistem penyambungan *heat fusion* dengan menggunakan alat pemanas. Dengan sistem sambungan ini, hasil penyambungan menjadi bersenyawa sehingga terjamin kekuatannya (sama dengan kekuatan pipa), anti kebocoran dan bebas perawatan serta umur penggunaan sampai 50 tahun.

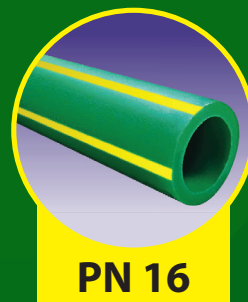
DAFTAR HARGA PIPA & FITTING



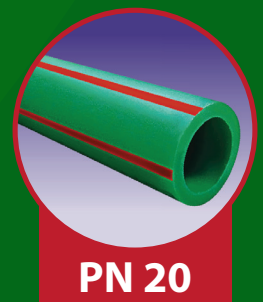
PIPA PP-R RUCIKA KELEN GREEN PANJANG 4 M / BATANG



PN 10



PN 16



PN 20

DN		PN 10		PN 16		PN 20	
INCH	MM	Exc. PPN*	Incl. PPN**	Exc. PPN*	Incl. PPN**	Exc. PPN*	Incl. PPN**
1/2"	20	Rp. 39.820	Rp. 44.200	Rp. 49.009	Rp. 54.400	Rp. 55.225	Rp. 61.300
3/4"	25	Rp. 52.162	Rp. 57.900	Rp. 76.577	Rp. 85.000	Rp. 84.775	Rp. 94.100
1"	32	Rp. 83.874	Rp. 93.100	Rp. 123.063	Rp. 136.600	Rp. 139.369	Rp. 154.700
1 1/4"	40	Rp. 132.883	Rp. 147.500	Rp. 191.261	Rp. 212.300	Rp. 214.865	Rp. 238.500
1 1/2"	50	Rp. 206.036	Rp. 228.700	Rp. 298.649	Rp. 331.500	Rp. 335.766	Rp. 372.700
2"	63	Rp. 326.126	Rp. 362.000	Rp. 469.640	Rp. 521.300	Rp. 531.982	Rp. 590.500
2 1/2"	75	Rp. 456.306	Rp. 506.500	Rp. 668.649	Rp. 742.200	Rp. 753.153	Rp. 836.000
3"	90	Rp. 658.649	Rp. 731.100	Rp. 958.378	Rp. 1.063.800	Rp. 1.082.432	Rp. 1.201.500
4"	110	Rp. 978.108	Rp. 1.085.700	Rp. 1.435.766	Rp. 1.593.700	Rp. 1.617.658	Rp. 1.795.600
6"	160	Rp. 3.333.423	Rp. 3.700.100	Rp. 4.833.423	Rp. 5.365.100	Rp. 5.512.883	Rp. 6.119.300

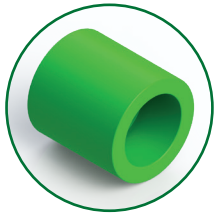


Keterangan :

- * Harga **belum termasuk** PPN 11%
- ** Harga **sudah termasuk** PPN 11%
- **PN10** : Aplikasi air panas & dingin tekanan kerja maksimal 10 Bar
- **PN16** : Aplikasi air panas & dingin tekanan kerja maksimal 16 Bar
- **PN20** : Aplikasi air panas & dingin tekanan kerja maksimal 20 Bar
- Harga dapat berubah sewaktu-waktu tanpa pemberitahuan terlebih dahulu
- DN: Diameter Nominal

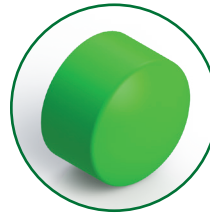
FITTING PP-R UNTUK APLIKASI AIR PANAS & AIR DINGIN BERTEKANAN

COUPLER



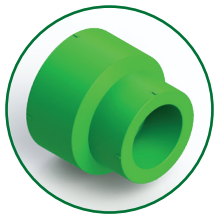
DN (mm)	Harga Exc. PPN (Rp)	Harga Inc. PPN (Rp)
20	3.423	3.800
25	3.694	4.100
32	4.955	5.500
40	9.640	10.700
50	18.919	21.000
63	30.000	33.300
75	71.892	79.800
90	87.207	96.800
110	128.288	142.400
160	641.982	712.600

CAP



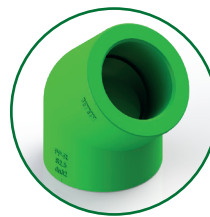
DN (mm)	Harga Exc. PPN (Rp)	Harga Inc. PPN (Rp)
20	2.703	3.000
25	3.333	3.700
32	5.586	6.200
40	25.405	28.200
50	27.748	30.800
63	39.189	43.500
75	107.207	119.000
90	372.883	413.900
110	411.982	457.300
160	1.763.694	1.957.700

REDUCER FEMALE



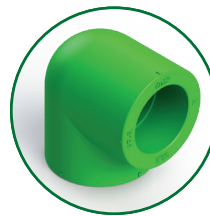
DN (mm)	Harga Exc. PPN (Rp)	Harga Inc. PPN (Rp)
25x20	3.694	4.100
32x20	6.216	6.900
32x25	7.297	8.100
40x20	9.640	10.700
40x25	9.640	10.700
40x32	11.441	12.700
50x20	13.333	14.800
50x25	15.315	17.000
50x32	17.207	19.100
50x40	18.468	20.500
63x25	20.360	22.600
63x32	21.441	23.800
63x40	31.441	34.900
63x50	33.333	37.000
75x32	39.009	43.300
75x40	42.793	47.500
75x50	44.685	49.600
75x63	49.820	55.300
90x32	52.883	58.700
90x40	55.405	61.500
90x50	57.477	63.800
90x63	66.486	73.800
90x75	75.495	83.800
110x50	106.667	118.400
110x63	108.378	120.300
110x75	141.351	156.900
110x90	175.856	195.200
160x110	279.369	310.100

ELBOW 45°



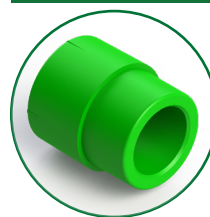
DN (mm)	Harga Exc. PPN (Rp)	Harga Inc. PPN (Rp)
20	4.595	5.100
25	6.577	7.300
32	8.829	9.800
40	16.757	18.600
50	29.730	33.000
63	62.432	69.300
75	92.793	103.000
90	158.649	176.100
110	251.532	279.200
160	1.016.757	1.128.600

ELBOW 90°



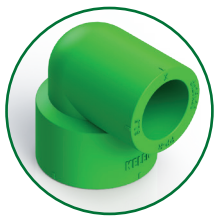
DN (mm)	Harga Exc. PPN (Rp)	Harga Inc. PPN (Rp)
20	5.315	5.900
25	6.847	7.600
32	7.838	8.700
40	16.306	18.100
50	25.946	28.800
63	44.324	49.200
75	77.297	85.800
90	128.468	142.600
110	197.838	219.600
160	1.154.865	1.281.900

REDUCER MALE / FEMALE



DN (mm)	Harga Exc. PPN (Rp)	Harga Inc. PPN (Rp)
25x20	4.505	5.000
32x20	6.306	7.000
32x25	8.108	9.000
40x25	11.982	13.300
40x32	14.144	15.700
50x32	21.351	23.700

REDUCED ELBOW



DN (mm)	Harga Exc. PPN (Rp)	Harga Inc. PPN (Rp)
25x20	6.036	6.700
32x20	6.216	6.900
32x25	7.027	7.800

REDUCED TEE



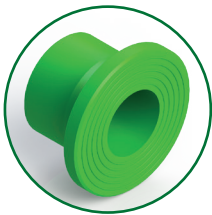
DN (mm)	Harga Exc. PPN (Rp)	Harga Inc. PPN (Rp)
25x20x25	8.829	9.800
32x20x32	10.000	11.100
32x25x32	10.811	12.000
40x20x40	21.622	24.000
40x25x40	22.072	24.500
40x32x40	27.658	30.700
50x20x50	40.450	44.900
50x25x50	44.955	49.900
50x32x50	46.396	51.500
50x40x50	56.577	62.800
63x20x63	71.441	79.300
63x25x63	72.613	80.600
63x32x63	73.694	81.800
63x40x63	75.495	83.800
63x50x63	78.649	87.300
75x25x75	90.180	100.100
75x32x75	95.315	105.800
75x40x75	101.532	112.700
75x50x75	142.883	158.600
75x63x75	142.883	158.600
90x32x90	151.622	168.300
90x40x90	162.523	180.400
90x50x90	178.378	198.000
90x63x90	185.405	205.800
90x75x90	232.072	257.600
110x50x110	266.667	296.000
110x63x110	287.838	319.500
110x75x110	328.468	364.600
110x90x110	361.351	401.100
160x90x160	776.757	862.200
160x110x160	870.180	965.900

STRAIGHT WAY VALVE



DN (mm)	Harga Exc. PPN (Rp)	Harga Inc. PPN (Rp)
20	109.730	121.800
25	175.766	195.100
32	247.207	274.400
40	372.883	413.900
50	451.802	501.500
63	784.144	870.400

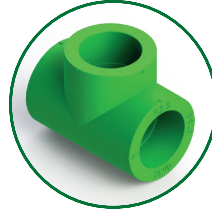
FLANGE ADAPTOR*



DN (mm)	Harga Exc. PPN (Rp)	Harga Inc. PPN (Rp)
63	42.252	46.900
75	94.324	104.700
90	144.505	160.400
110	180.721	200.600

*PN 10, Female Connection

EQUAL TEE



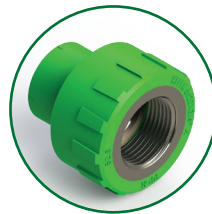
DN (mm)	Harga Exc. PPN (Rp)	Harga Inc. PPN (Rp)
20	5.315	5.900
25	6.486	7.200
32	9.369	10.400
40	19.910	22.100
50	32.423	36.000
63	77.658	86.200
75	123.694	137.300
90	160.721	178.400
110	283.333	314.500
160	1.443.423	1.602.200

MALE THREAD JOINT



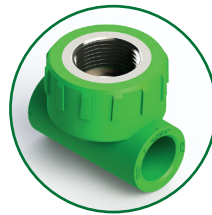
DN (mm)	Harga Exc. PPN (Rp)	Harga Inc. PPN (Rp)
20x1/2"	36.577	40.600
20x3/4"	55.315	61.400
25x1/2"	36.757	40.800
25x3/4"	51.351	57.000
32x3/4"	80.450	89.300
32x1"	94.955	105.400
40x1-1/4"	181.802	201.800
50x1-1/2"	286.216	317.700
63x2"	434.775	482.600
75x2-1/2"	802.162	890.400
90x3"	1.257.117	1.395.400

FEMALE THREAD JOINT



DN (mm)	Harga Exc. PPN (Rp)	Harga Inc. PPN (Rp)
20x1/2"	28.559	31.700
20x3/4"	41.712	46.300
25x1/2"	30.811	34.200
25x3/4"	37.748	41.900
32x3/4"	72.162	80.100
32x1"	79.369	88.100
40x1-1/4"	212.072	235.400
50x1-1/2"	216.216	240.000
63x2"	395.946	439.500
75x2-1/2"	499.730	554.700
90x3"	735.315	816.200

FEMALE THREAD TEE



DN (mm)	Harga Exc. PPN (Rp)	Harga Inc. PPN (Rp)
20x1/2"	34.955	38.800
20x3/4"	39.640	44.000
25x1/2"	44.234	49.100
25x3/4"	50.811	56.400
32x1/2"	58.468	64.900
32x3/4"	66.126	73.400
32x1"	106.757	118.500

MALE THREAD TEE



DN (mm)	Harga Exc. PPN (Rp)	Harga Inc. PPN (Rp)
20x1/2"	48.559	53.900
20x3/4"	66.306	73.600
25x1/2"	50.811	56.400
25x3/4"	62.342	69.200
32x1/2"	115.946	128.700
32x3/4"	119.640	132.800
32x1"	176.937	196.400

ELBOW FEMALE THREAD WITH DISK



DN (mm)	Harga Exc. PPN (Rp)	Harga Inc. PPN (Rp)
20x1/2"	45.766	50.800
25x1/2"	46.036	51.100

ELBOW MALE THREAD WITH DISK



DN (mm)	Harga Exc. PPN (Rp)	Harga Inc. PPN (Rp)
20x1/2"	64.685	71.800
25x1/2"	66.216	73.500

ELBOW FEMALE THREAD 90°



DN (mm)	Harga Exc. PPN (Rp)	Harga Inc. PPN (Rp)
20x1/2"	30.721	34.100
25x1/2"	39.730	44.100
25x3/4"	46.577	51.700
32x1"	97.568	108.300

ELBOW MALE THREAD 90°



DN (mm)	Harga Exc. PPN (Rp)	Harga Inc. PPN (Rp)
20x1/2"	44.054	48.900
25x1/2"	48.018	53.300
25x3/4"	67.838	75.300
32x1"	104.144	115.600

Catatan :

1. Exc. PPN: Harga fitting belum termasuk PPN 11 %
2. Inc. PPN: Harga fitting sudah termasuk PPN 11%
3. Harga loco pabrik di Cibitung, Bekasi
4. Harga dapat berubah sewaktu-waktu tanpa pemberitahuan terlebih dahulu
5. DN: Diameter Nominal

PT WAHANA DUTA JAYA RUCIKA

ALIA Building 7th Floor, Jl. M.I Ridwan Rais 10-18,
Jakarta 10110 - INDONESIA

Telp : (021) 386 7717
Fax : (021) 386 7686
Email : info@rucika.co.id

www.rucika.co.id |  Rucika  @rucikaofficial  @rucikaofficial